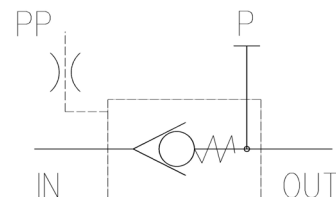




Filling valves characteristics

TYPE	Size	Max. Flow	Max. Press.	Opening ratio	Decompr. ratio	Max pilot pressure	Opening pressure	Weight (Kg)
R-114	DN-32	160 l/min.	400 bar	3.6:1	1:5	100 bar	0.12 bar	1.2
R-112	DN-40	250 l/min.		3.9:1				1.7
R-200	DN-50	400 l/min.		4.2:1				2.5
R-212	DN-63	600 l/min.		4.5:1			3.5	
R-300	DN-80	1000 l/min.		4.3:1			5.2	
R-400	DN-100	1600 l/min.		12				
R-500	DN-125	2500 l/min.		20				
R-600	DN-160	4000 l/min.	350 bar	4.0:1		0.15 bar	42	
R-800	DN-220	7000 l/min.					116	

Description These valves allow the quick pre-filling and discharging of cylinders in compression presses. They are available with or without pre-opening device. The conical seat of the obturator allows the perfect sealing.

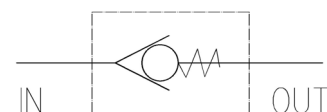


PP Pilot port
P Auxiliary pressure port
IN Tank side
OUT Cylinder side

Check valves characteristics

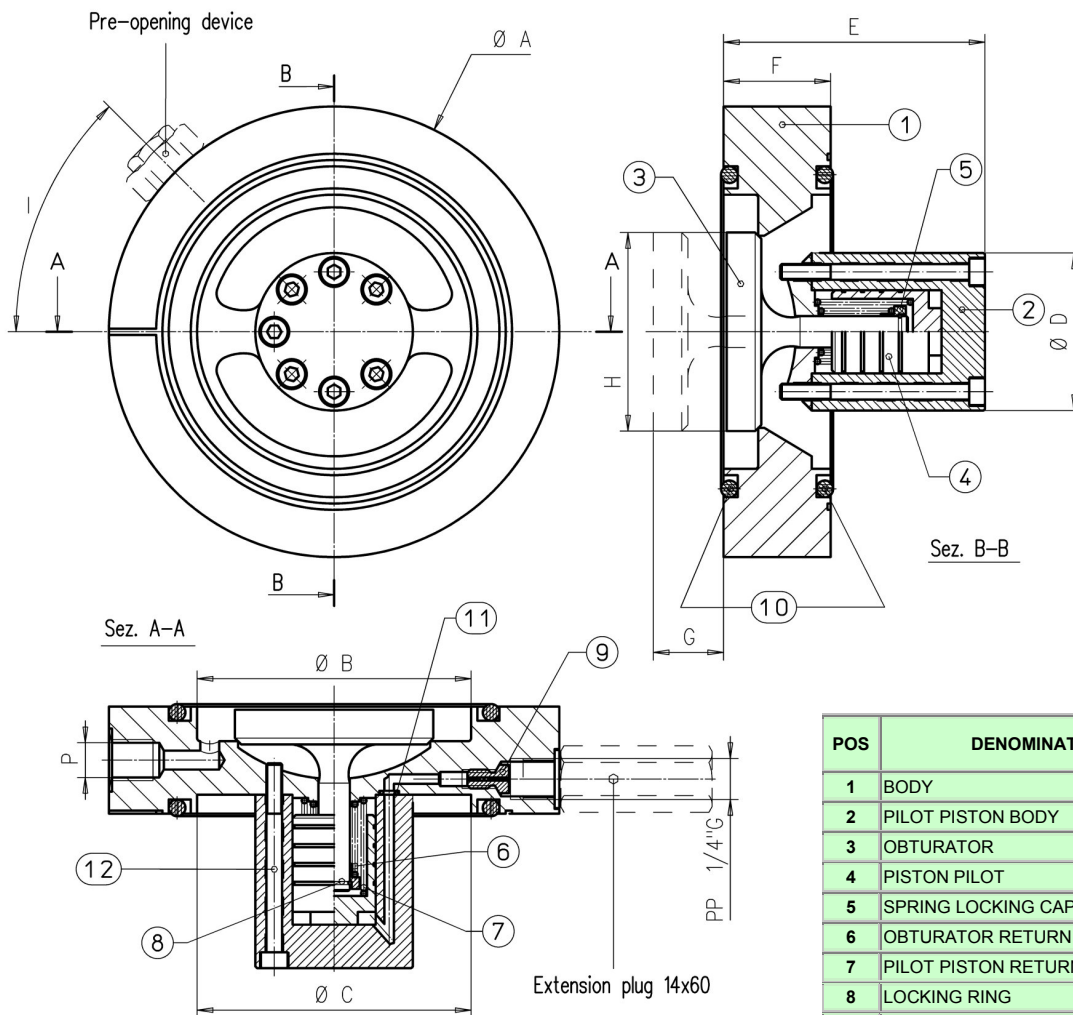
TYPE	Size	Max. flow	Max. Pressure	Opening pressure	Weight (Kg)
RR-114	DN-32	160 l/min.	400 bar	0.12 bar	1
RR-112	DN-40	250 l/min.			1.5
RR-200	DN-50	400 l/min.			2
RR-212	DN-63	600 l/min.		3	
RR-300	DN-80	1000 l/min.		4.5	
RR-400	DN-100	1600 l/min.		10	
RR-500	DN-125	2500 l/min.		16	
RR-600	DN-160	4000 l/min.	350 bar	0.15 bar	33.5
RR-800	DN-220	7000 l/min.			

Description The check valves allow the flow in one direction and prevent it in the opposite one. The mounting is in line by means of suitable flanges according to DIN norms.



IN Tank side
OUT Cylinder side

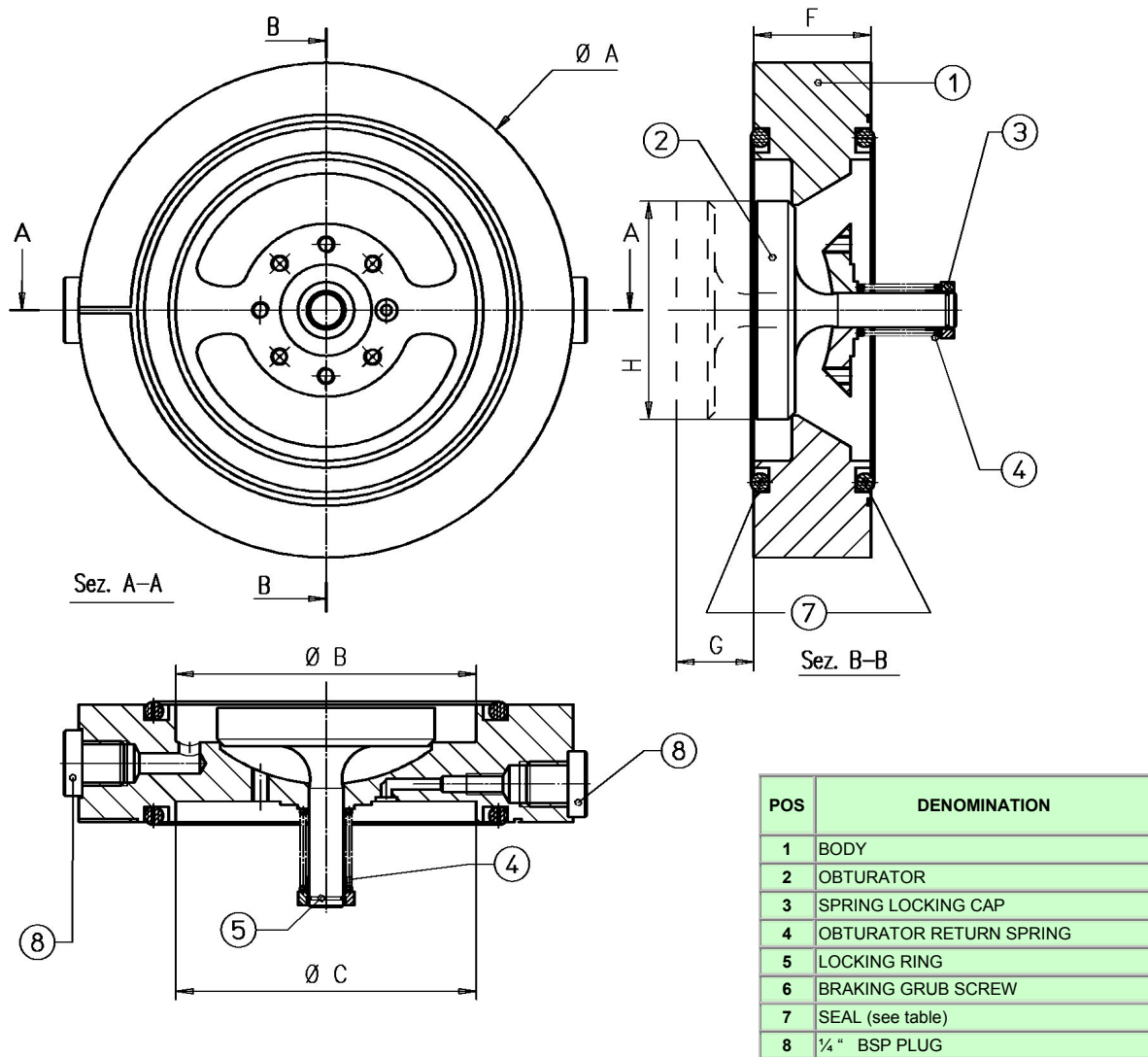
FILLING VALVES



POS	DENOMINATION
1	BODY
2	PILOT PISTON BODY
3	OBTURATOR
4	PISTON PILOT
5	SPRING LOCKING CAP
6	OBTURATOR RETURN SPRING
7	PILOT PISTON RETURN SPRING
8	LOCKING RING
9	BRAKING GRUB SCREW
10	SEAL (see table)
11	SEAL
12	SCREWS

TYPE	A	B	C	D	E	F	G	H	I	P (Bsp)
R-114	93	43	43	32	55	27	8	32	60°	1/4
R-112	108	54	57	39	60	28	10	41.5	45°	1/4
R-200	128	73	73	43	72	29	12	53	45°	1/4
R-212	143	87	87	50	83	34	14	63	45°	1/4
R-300	169	107	107	56	97	38.5	17	77.5	45°	1/4
R-400	212	130	130	69	118	44	22	95.5	45°	3/8
R-500	248	168	151	88	155	51	30	127	-	3/8
R-600	310	180	204	108	220	70	41	160	-	-
R-800	420	310	260	140	300	120	25	200	-	-

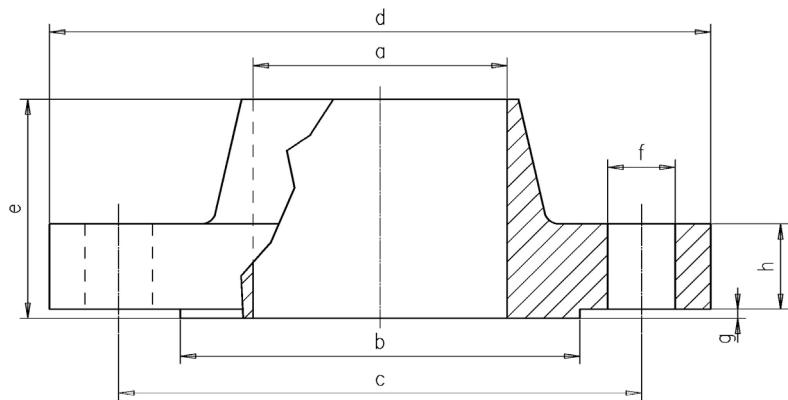
CHECK VALVE



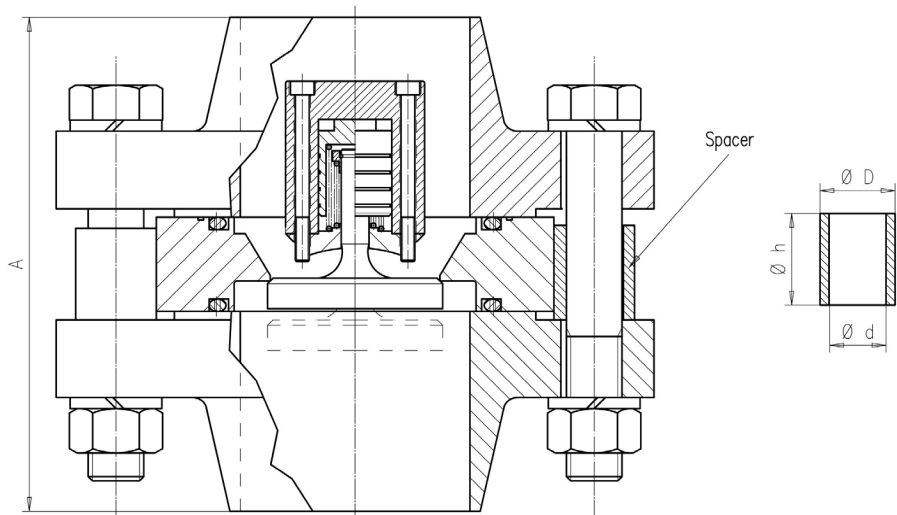
POS	DENOMINATION
1	BODY
2	OBTURATOR
3	SPRING LOCKING CAP
4	OBTURATOR RETURN SPRING
5	LOCKING RING
6	BRAKING GRUB SCREW
7	SEAL (see table)
8	1/4" BSP PLUG

TYPE	A	B	C	F	G	H
RR-114	93	43	43	27	8	32
RR-112	108	54	57	28	10	41.5
RR-200	128	73	73	29	12	53
RR-212	143	87	87	34	14	63
RR-300	169	107	107	38.5	17	77.5
RR-400	212	130	130	44	22	95.5
RR-500	248	168	151	51	30	127
RR-600	310	180	204	70	41	160
RR-800	420	310	260	120	-	200

Flanges dimensions



TYPE	UNI	DIN	DN	a	b	c	d	e	f	g	h
FL-R114	2284	2635	40	39	88	110	150	45	18	2.5	18
FL-R112	2285	2636	50	51	95	135	180	62	22	2.5	26
FL-R200	2285	2636	65	68	120	160	205	68	22	2.5	26
FL-R212	2285	2636	80	82	130	170	215	72	22	2.5	28
FL-R300	2285	2636	100	100	160	200	250	78	25	2.5	30
FL-R400	2286	2637	125	128	185	250	315	105	33	2.5	40
FL-R500	2286	2637	150	156.5	215	290	355	115	33	3	44

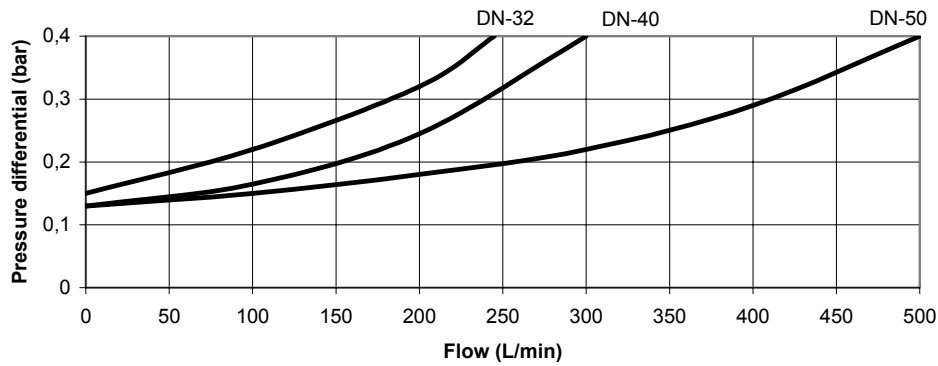


TYPE	A	Screw	N°of screws	$\varnothing d$	$\varnothing D$	h	LOCKING TORQUE (kgm)
R-114/FL	117	M16	4	16.5	19	26.5	21
R-112/FL	152	M20			29	27.5	30
R-200/FL	165		M20	8	20.5	34	28.5
R-212/FL	178	29				34	41
R-300/FL	195	M24	8	24.5	32	38	70
R-400/FL	254	M30					
R-500/FL	281		56.5	130			

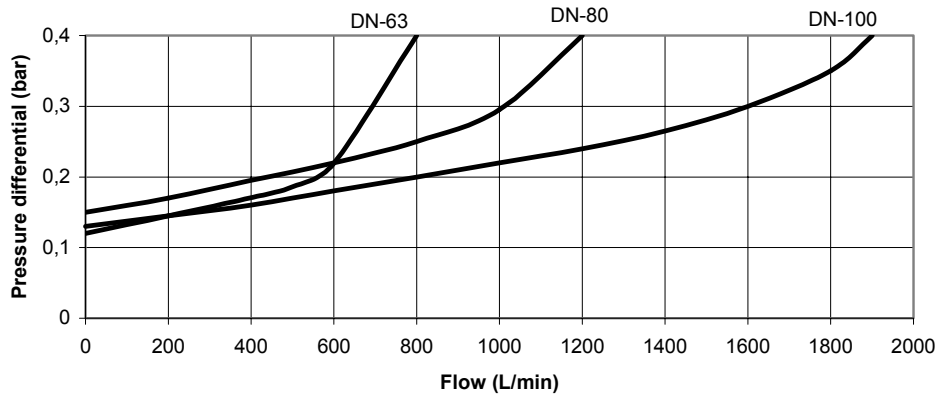


Differential pressure in suction and filling in relation to the flow

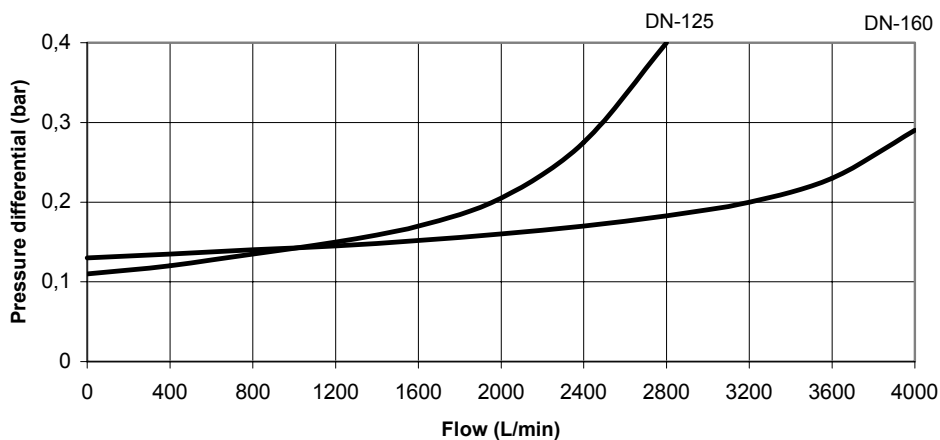
Nominal sizes 32, 40, 50



Nominal sizes 63, 80, 100



Nominal sizes 125, 160





Seal

SEAL x R-***		
Model	(copper-made)	OR (90Sh)
R-114	R52x45x2	
R-112	R68x60x2	
R-200	R85x75,5x2	
R-212		6375
R-300		6450
R-400		8550
R-500		8725
R-600		8875
R-800		81300

Installation rules

- For sizes up to 212, the assembly can be made either vertical or horizontal. For bigger sizes the horizontal assembly is compulsory.
- Fluid to be used: hydraulic oil in compliance with DIN 51524 rules, viscosity between 30 and 100 mm²/s (cSt) at 40°C
- Recommended filtration of 25µ.
- Hydraulic fluid temperature: from -20° to +75°C

Ordering code

